

NOVOFIBRE®



Panels for healthy living



Did you know that we spend 90 percent of our lifetimes in enclosed rooms?



Indoor environments have a tremendous influence on our health and productivity. Therefore, a first step to healthy living is making a conscious decision in favor of environment-friendly materials.

Construction materials have been known to emit toxins released by adhesives, solvents, or softeners. Such indoor pollutants are especially hazardous to children and may cause headaches and allergic reactions in individuals with sensitivities. Some pollutants are even carcinogenic. The unfortunate aspect of all these pollutants is that they are invisible.

NOVOFIBRE OSSB panels for healthy living spaces

Regardless whether they are used in your home or for facilities like kindergartens and schools, extremely low-pollutant OSSB panels turn rooms into places for healthy living and working:

- Manufactured out of natural high-quality wheat straw
- Completely free of formaldehyde-containing adhesives and environmentally harmful chemicals
- Very low TVOC values overall, i.e., no damaging effects on the health of building residents or the environment in general

NOVOFIBRE panels have been awarded the VOC A+ certificate (France) and the ECO-INSTITUT label (Germany) among others. These testing and certification procedures prove that OSSB panels meet very strict requirements pertaining to contaminants and emissions.

ISO9001 certification

C€ certification

F★★★★ certification, Japan

ECO - INSTITUT labeling certification, Germany

Environmental certification (A+ grade), France

CARB certification, North America

GECA license, Australia

Environmental labeling certification, China

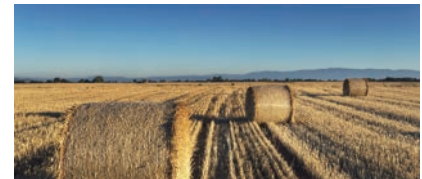


A sustainable high-tech product

NOVOFIBRE's Oriented Structural Straw Boards (OSSB) are made of straw, a common agricultural side product - this is ideal for people and nature. Re-utilizing straw is much better than burning it, which means lower CO₂ emissions. In addition, the raw material:

- Is available year-round, worldwide, in practically unlimited quantities
- Is energy-efficient throughout the entire production process
- Features excellent biocompatibility before, during, and after use
- Can be recycled (cradle-to-cradle principle)

Prior to processing, high-quality straw is cleaned, prepared, split, and lastly pressed and glued in a continuous hot pressing process. In a special procedure, the straw is given an oriented structure. The result is a product whose load-bearing capability and mechanical strength are very high, and which compares favorably to established wood materials such as P6 particle board and OSB4. To achieve this top quality, the first production facility in central China is equipped with the latest technologies and systems made by European machine and system manufacturers.



Versatile and aesthetic

NOVOFIBRE OSSB panels combine all the advantages of solid wood and particle board panels:

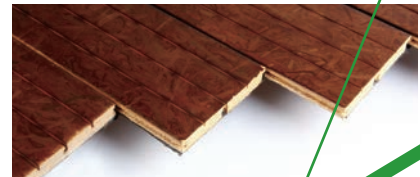
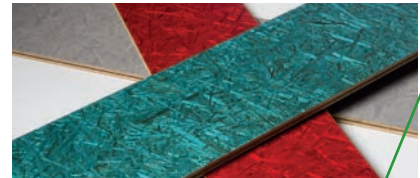
- High structural strength and very high load-bearing capability
- Outstanding workability (e. g., high nail and screw retention capability)
- Excellent construction-related properties overall

Please inquire about additional technical and economic parameters, especially in comparison to wood materials!

NOVOFIBRE OSSB panels are available in various models:

- NOVO PANEL BOARDS - BASE, CONSTRUCTION and DECO: for non-visible as well as decorative use in interior construction, for furniture and high-end packaging solutions
- NOVO SERIES: enhanced panels for specific applications, including flooring, acoustic ceilings / walls, and interior decoration solutions

With smooth or textured surfaces, in a natural straw-gold color or stained in matte or glossy finishes, NOVOFIBRE straw panels are the better alternatives to conventional panels in any situation.



Find out more about Novofibre



**Please contact us to obtain additional information
or if you have questions about an actual project!**

Günter Moeller
T : +49 (0) 173 - 65 121 33
guenter.moeller@novofibre.com

Sales partner for Germany, Austria, and Switzerland
TVB Burgstaller | Marcel Burgstaller (M.Sc)
Lieslmoosstraße 29 | 83417 Kirchanschöring | Germany

T : +49 (0) 8685 - 3379024
M : +49 (0) 157 - 87780808
F : +49 (0) 3212 - 1442803
www.istraw.de | marcel.burgstaller@istraw.de

Novofibre Construction Materials Sales (Beijing) Co., Ltd
Room A116 | A2 Zone | Zhao Wei Hua Deng Mansion
14 Jiuxianqiao Road | Chaoyang District | 100016 Beijing | China

T : +86 (10) 58671900 - 802 (Export Business)
E : info@novofibre.com

www.novofibre.com